

Historic, Archive Document

Do not assume content reflects current scientific knowledge, policies, or practices.



62.61

LIBRARY
RECEIVED

★ SEP 24 1947 ★

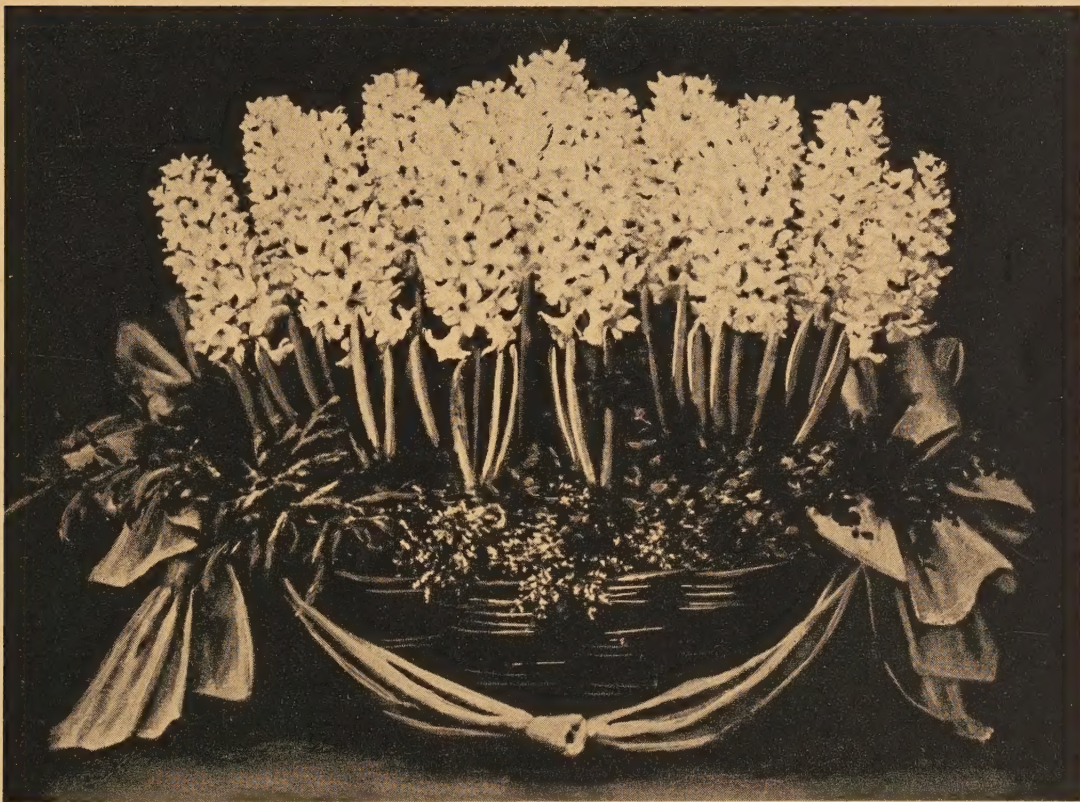
U.S. DEPARTMENT OF AGRICULTURE

*Fiftieth
Anniversary*

1897-1947

SSS

FALL CATALOG



S.S. Skidelsky & Co., Inc.

144 WEST 27TH ST.

NEW YORK 1, N.Y.

S. S. SKIDELSKY & CO., INC.

144 WEST 27th ST., NEW YORK 1, N. Y.

ESTABLISHED

OUR 51st YEAR

1897

YOUR GUARANTEE

SSS

OF QUALITY

1947

BULBS - PLANTS - SEEDS - SUPPLIES

A Message To The Trade ★ ★ ★



CHickering 4-
4 3 2 7 - 4 3 2 8

EASTER DATES

MARCH 28, 1948

APRIL 17, 1949

APRIL 9, 1950

The bulb situation—both foreign and domestic—is at this time extremely unsettled. Weather conditions here and abroad have been most unfavorable. From all accounts there will be a shorter crop of almost all Dutch items—Hyacinths, Tulips, Iris, etc., than in many years. As a result, prices have been considerably advanced, even on early placed orders. As some items will definitely be short, may we suggest when ordering, that you permit us to substitute if necessary with the nearest size and/or nearest similar variety to that which you may want. If prices at time of delivery are lower than those listed, you will be given the benefit, if higher, you will be advised prior to shipment.

LILIES: The crop in the South is extremely limited. Therefore, we strongly advise ordering *CROFT* for Easter—there is no better—Estate for cut. These are both from the Pacific Northwest—the finest Lily growing section in the United States.

We have appreciated your confidence in the past fifty years—we shall continue to make every effort to warrant it in the future.

President

Sidney H. Skidelsky

TERMS

All bills are subject to 2 per cent discount within 10 days from invoice date. Sixty days net. Sight draft, plus interest, thereafter.

Shipments are forwarded by best carrier, in our judgment at time of delivery, unless otherwise specified by customer.

First-class stock is carefully packed when shipment is made, and we hold good order receipt from the transportation company. Our responsibility ceases thereafter. If the stock reaches you in bad condition, notify agent and bring claim against the delivery company for damage by their negligence, as no allowance for this cause can or will be made by us.

All items in this list are offered subject to crop deliveries or failures, and being unsold on receipt of order, and other conditions beyond our control, and the prices are subject to change without notice.

Bulbs, whether shipped on arrival or placed in cold storage for later delivery, may be examined at time of arrival if desired, but no claims will be entertained at a later date.

As to all items other than **bulbs**, claims must be made within five days after receipt or they cannot be recognized.

Discounts for cash with order, except on cyclamen, grass seed, or special quotation. Flower seed orders up to \$25.00—5%. Over \$25.00—8%.

Vegetable Seeds—2%. All other items—3%.

New accounts desiring credit, please give three trade references.

We mail all flower seeds free to any point in the United States, at prices listed in this catalogue.

Note: Purchaser pays transportation on grass and vegetable seeds.

Disclaimer. While we, S. S. Skidelsky & Co., Inc., exercise the greatest care to have all seeds pure and reliable, and all bulbs, plants and cuttings true to name, we do not give any warranty, express or implied, and will not be in any way responsible for the crop. If the purchaser does not accept the goods on these terms they must be returned at once and the money will be refunded. Our liability, in all instances, is limited to the purchase price of the seeds, bulbs, roots or plants.



BULBS FOR FORCING and Fall Planting



SINGLE EARLY TULIP, KEIZERSKROON



DARWIN TULIP, BARTIGON MAXIMUS

SINGLE EARLY TULIPS

	1st size Per 100	1 1/2 Cm. Per 1000
* Coleur Cardinal. Rich deep crimson scarlet shaded plum crimson; good bedder and late forcer. Excellent for pots. Height 12 inches....	6.00	52.00
* Fred Moore. Orange terracotta, bright orange yellow at the margin of each segment; sweet scented; tall stem. Splendid for early forcing. Height 16 inches.....	5.00	42.00
* General De Wet. Orange shaded orange-scarlet on a golden yellow ground. Sweet scented. One of the best Early Singles for both bedding and forcing. Height 14 inches.....	6.00	52.00
* Keizerskroon (Grand Duc.). Bright crimson scarlet with broad golden yellow border; bold cup shaped flower on stout stem. Good for medium late forcing. Very effective bedder. Height 16 inches.....	6.00	52.00
* Pink Beauty. Deep rose with broad stripe of white on center of petals; a bi-colored Tulip; very large stately flower of pleasant appearance on strong stem. Excellent bedder. Height 13 inches	6.50	60.00

	1st size Per 100	1 1/2 Cm. Per 1000
* Prince of Austria. Outside dull orange-scarlet, inside brilliant scarlet with bright yellow base; large globular flower on tall strong stem; very sweet scented. Fine bedder and good forcer. Height 12 inches.....	5.00	42.00
* Rising Sun. Golden yellow; medium sized oval flower of great substance on stout stem. Good for forcing. Excellent bedder. Height 16 inches	5.50	50.00
* Rose Luisante. Deep rose-pink and white; fine color, large flower of great substance on stout stem. Splendid for medium late and late forcing. One of the finest bedding varieties. Height 12 inches.....	6.00	52.00
* White Hawk (White Falcon). Milk-white; large globular flower of great substance with crinkled petals on stout stem. Very good keeper. Recommended for early forcing and fine bedding variety. Height 12 inches.....	5.00	42.00
* Yellow Prince. Deep canary yellow of fine form; one of the best yellows for bedding and forcing. Sweet scented. Height 10 inches.....	5.50	50.00

*Varieties recommended for forcing.

"MINIMUM ORDER—100 BULBS OF A VARIETY"
PRICES SUBJECT TO CHANGE WITHOUT NOTICE.

DOUBLE EARLY TULIPS

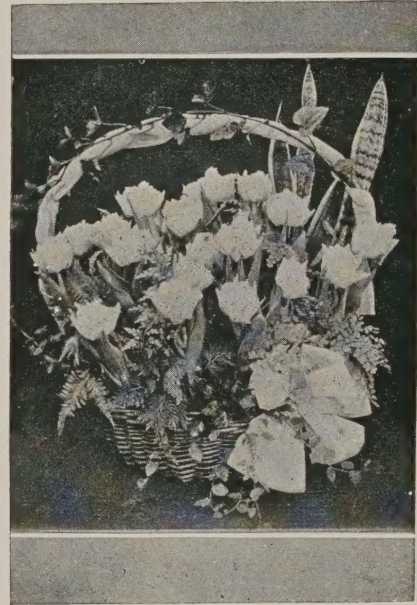
	1st size Per 100	11/12 Cm. Per 1000
* Couronne D'Or. Bright golden yellow, heavily flushed and shaded rosy crimson. Extra for forcing. Splendid bedder. Height 15 inches....	6.50	60.00
* Electra. Bright cerise carmine, a glistening color; excellent form and substance. Large very double flower. Height 12 inches.....	6.00	52.00
* Mr. Van Der Hoeff. Fine deep canary yellow bedder and forcer. Height 11 inches.....	6.00	52.00
* Murillo. Delicate rose; popular bedder and forcer. Height 11 inches.....	5.50	50.00
* Orange Nassau. Bright orange scarlet heavily suffused orange. Height 11 inches.....	6.00	52.00
* Peach Blossom. Silvery pink on white ground flushed carmine rose. Fine bedder and forcer. Height 12 inches.....	5.50	50.00
* Scarlet Cardinal. Very large dazzling scarlet. Can be forced from Dec. 20th. Height 10 inches	6.50	60.00
* Schoonoord. Pure white, large flower; ideal bedder and forcer. Height 12 inches.....	6.00	52.00
Tournesol. Red and Yellow. Crimson deeply edged canary yellow; a good bedder and a very easy forcer. Height 9 inches.....	6.50	60.00
* Triumphator. Very bright satin rose, of good form, paler at edges, very fine. Height 10 inches	6.00	52.00
* Vuurbaak. Bright scarlet with orange flush, very large full flower on strong stem. Grand for bedding and a good forcer. Height 12 inches	6.00	52.00



DARWIN, PRUNUS

DARWIN TULIPS

	Top size Per 100	12 Up Per 1000	1st size Per 100	11/12 Per 1000
Afterglow. Deep rosy crimson, edged salmon orange; unique. Height 28 inches.....	6.00	55.00	5.00	44.00
* All Bright. Bright Red Bartigon sport. Can be forced from Jan. 15th. Height 24 inches.....	5.00	45.00	4.00	36.00
Anton Mauve. Beautiful mauve violet with light border. Height 25 inches	6.00	55.00	5.00	44.00
* Bartigon Maximus. A larger form of Bartigon. Clear crimson red, white base, ringed deep blue. Extra fine for forcing and pans, cutting and bedding. Height 24 inches	5.00	45.00	4.00	36.00



DOUBLE EARLY TULIP
MR. VAN DER HOEFF

DARWIN TULIPS

	Top size Per 100	12 Up Per 1000	1st size Per 100	11/12 Per 1000
Black Eagle (Syn. Blue Eagle). Medium large. Deep purple. Height 26 inches.....	6.25	57.00	5.00	46.00
Bleu Aimable. Bright violet-blue; white base, starred blue. Height 25 inches.....	6.25	57.00	5.00	46.00
* Campfire. Blood-red Bartigon sport. Extra fine forcer. Height 24 inches	5.00	45.00	4.00	36.00
Charles Needham. Huge glowing vermilion-scarlet. Height 24 inches	6.00	56.00	5.00	45.00
* City of Haarlem. Intense deep scarlet, with white margined deep blue base. One of the best Scarlet Darwin Tulips for growing indoors as well as outdoors. Height 25 inches.....	6.00	56.00	5.00	45.00
Clara Butt. Beautiful clear salmon-pink with blue base. One of the old, good bedding varieties. Height 23 inches.....	6.00	54.00	5.00	43.00
* Demeter. Reddish-purple, extra large perfect shaped flower. Very early excellent forcer. Can be forced from Dec. 25th. Height 28 inches.....	6.25	57.00	5.00	46.00
Eclipse. Glowing blood red, very fine. Height 25 inches.....	6.25	56.00	5.00	45.00
Farncombe Sanders. Bright scarlet; inside vivid cerise scarlet with white base, marked blue. Large, broad petalled flower of perfect shape. Height 32 inches.....	5.75	53.00	4.50	40.00
Faust. Dark maroon, bright purple sheen; fine form; unique color. Height 30 inches.....	6.25	57.00	5.00	46.00

*Varieties recommended for forcing.

"MINIMUM ORDER—100 BULBS OF A VARIETY"
PRICES SUBJECT TO CHANGE WITHOUT NOTICE.

DARWIN TULIIPS

	Top size Per 100	12 Up Per 1000	1st size Per 100	11/12 Per 1000
Giant. Rich bright ruby purple shaded deep violet; very strong grower, fine form and substance. Height 30 inches.....	6.25	56.00	5.00	45.00
Glacier (Syn. Wild Lust). Extra large ivory-white, large oval shaped flower with fine lasting qualities. Height 27 inches..	7.00	60.00	5.50	47.00
*Golden Age. Golden yellow edged salmon orange. Can be forced from Jan. 25th. Height 24 inches	6.00	54.00	5.00	42.00
Helen Eakin (Syn. White Perfection). Considered one of the finest pure white Tulips. Height 32 inches	6.00	55.00	5.00	45.00
*Insurpassable. A very large lilac flower of fine form and great substance; a tall and strong growing variety. Height 28 inches	6.25	57.00	5.00	46.00
King George V. Deep cherry rose with blue and white base. Large flower of splendid form on strong, tall stem. Height 30 inches	6.25	56.00	5.00	45.00
La Tulipe Noire. Velvety deep maroon black; the darkest of all Tulips. Height 28 inches....	6.00	56.00	5.00	45.00
*Niphotos. Medium large soft sulphur yellow, inside primrose-yellow. Fine lasting qualities. Can be forced from Jan. 25th. Height 26 inches.....	6.00	56.00	5.00	45.00
*Philip Snowden. Delicate rose Bartigon sport, extra large flower. Can be forced from Jan. 15th. Height 24 inches.....	5.00	45.00	4.00	36.00
Pride of Haarlem. Brilliant rosy-carmine with blue base. Large flower on tall, strong stem. One of the most popular varieties. Height 30 inches.....	5.75	53.00	4.50	40.00
*Pride of Zwabenburg. Enormous bright rose with lighter edge. Can be forced from Jan. 15th. Height 28 inches.....	6.00	56.00	5.00	45.00
*Princess Elizabeth (Julie Virnot). Vivid rosy pink with lighter edges. Very fine for forcing and planting outside. Height 29 inches	5.75	53.00	4.50	40.00
*Princess Mary. Huge brilliant rose-pink. Extra fine form and good forcer. Height 28 inches....	6.25	56.00	5.00	45.00
*Prunus. Clear salmon-pink Bartigon sport. Can be forced from Jan. 15th. Height 24 inches.....	5.00	45.00	4.00	36.00
*Red Pitt. Bright red Wm. Pitt sport. Can be forced from Jan. 10th. Height 24 inches.....	6.25	56.00	5.00	45.00
The Bishop. Beautiful deep heliotrope; blue base with white halo and purple anthers; a large flower of great beauty, tall sturdy grower. Height 30 inches	6.25	57.00	5.00	46.00

	Top size Per 100	12 Up Per 1000	1st size Per 100	11/12 Per 1000
--	------------------------	----------------------	------------------------	----------------------

*Wm. Pitt. Bright scarlet with purplish bloom on the outer petals; and blue starred white base. Excellent variety for forcing. Height 25 inches.....	5.75	53.00	4.50	40.00
White Giant. Extra tall giant pure white flower which has unusual lasting qualities. Height 28 inches	7.00	60.00	5.50	47.00
Yellow Giant. Rich deep golden yellow with black anthers. Globular flowers on tall, strong stem. Height 32 inches.....	6.00	55.00	5.00	45.00
*Zwabenburg. Pure white with black anthers; tall stem. This variety has good keeping qualities. Height 29 inches.....	6.00	55.00	5.00	45.00
Superfine Mixed	5.00	45.00	4.00	36.00

BREEDER TULIPS

Bacchus. Deep bright ruby purple with beautiful sheen. Height 28 inches	6.00	55.00	5.00	45.00
Cherbourg. Golden yellow heavily shaded and margined bronze. Height 27 inches.....	6.25	57.00	5.00	46.00
Dillenburg. Bright salmon orange, with deep lilac rose flush on the outer petal. Very attractive variety, excellent for exhibition. Height 28 inches.....	6.00	55.00	5.00	45.00
Dom Pedro. Medium large flower of morocco-red on cadmium-yellow ground. Height 24 inches	6.00	55.00	5.00	45.00
Indian Chief. Very large reddish mahogany, slightly flushed violet. Height 32 inches.....	6.25	57.00	5.00	46.00
Louis XIV. Purple flushed golden bronze, recommended. Height 26 inches	6.00	55.00	5.00	45.00
Lucifer. Rich cherry scarlet, flushed orange; a very fine variety. Height 30 inches.....	6.00	55.00	5.00	45.00
Tantalus. Large dull yellow, flushed pale purple and lilac. Height 30 inches.....	6.25	57.00	5.00	46.00
Superfine Mixed	6.00	55.00	5.00	45.00

COTTAGE TULIPS

Advance. Huge fiery scarlet, blackish-blue base. Early and very outstanding. Height 30 inches	5.75	53.00	4.50	40.00
*Albino. Pure white, exceptionally strong stem; fine form and substance. Excellent for forcing. Height 14 inches.....	6.25	56.00	5.00	45.00
*Carrara. One of the finest of all white Tulips, solid color and fine form; good forcer. Height 23 inches	6.00	55.00	5.00	45.00

*Varieties recommended for forcing.



COTTAGE TULIPS, CARRARA

COTTAGE TULIPS

	Top size Per 100	12 Up Per 1000	1st size Per 100	11/12 Per 1000
Dido. Orange red; slightly flushed cerise with amber-orange edges; inside salmon-orange with yellow base passing to slatish green, and yellow anthers. Height 30 inches.....	5.75	53.00	4.50	40.00
* Golden Harvest. Lemon-yellow, large flower of good substance on strong stem. Height 28 inches	5.75	53.00	4.50	40.00
Inglescombe Yellow. Canary yellow with yellow anthers. Color will sometimes change to orange with orange red, due to climatic conditions. Height 18 inches	5.75	53.00	4.50	40.00
Mongolia. Very large globular flower. Color canary-yellow; extra strong stem. A most excellent show flower. Height 32 inches	6.25	56.00	5.00	45.00
Moonlight. Soft pale yellow; oval shaped flower of good substance, with slightly reflexed petals. Height 26 inches.....	6.25	56.00	5.00	45.00
* Mother's Day (Lemon Queen). Lemon yellow, long flower, perfect shape. Can be forced from Jan. 20th. Height 24 inches	5.75	53.00	4.50	40.00
Mrs. John T. Scheepers. An enormous flower of bright yellow color, oval shaped and of great substance. One of the largest and best of all yellow tulips. Height 26 inches.....	6.25	56.00	5.00	45.00
Mrs. Moon. Rich golden yellow, a large flower of good substance, with pointed reflexing petals. Height 25 inches.....	6.25	56.00	5.00	45.00
Rosabella. Delicate pink with broad white margin and creamy white base; a strong flower of dainty appearance on medium length stem. Height 20 inches	6.25	56.00	5.00	45.00
* Sirene (Lily flowered). Satin rose with white base; suitable for forcing in March.....	5.75	53.00	4.50	40.00
Superfine Mixed	5.75	53.00	4.50	40.00



PARROT FANTASY



DOUBLE EARLY



DOUBLE EARLY

PARROT TULIPS

	Top size Per 100	12 Up Per 1000	1st size Per 100	11/12 Per 1000
Blue Parrot. Huge bluish heliotrope. Parrot sport of Darwin Bleu Aimable. Height 24 inches	8.00	70.00	7.00	60.00
Fantasy. Salmon-pink with green markings on outer petals inside deeper salmon-pink. A sport of Darwin Clara Butt. Height 18 inches.....	6.25	56.00	5.00	45.00
* Red Champion. Large cochineal-red, flushed scarlet. Height 24 inches. Can be forced from Jan. 20th	8.50	75.00	7.50	65.00
Sunshine. Pure golden-yellow. Height 18 inches.....	8.00	70.00	7.00	60.00
Violet Queen. Lilac blue, white base. Very attractive. Height 24 inches	7.00	65.00	6.00	55.00

DOUBLE LATE OR PEONY FLOWERED TULIPS

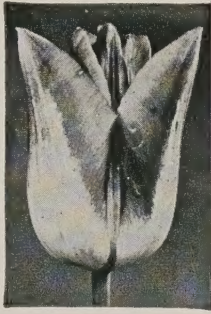
Bleu Celeste (Syn. Blue Flag). Light violet-blue. Very attractive. Height 14 inches.....	6.25	56.00	5.00	45.00
Coxa. Carmine red edged vermilion with small white border. Extra large flower. Height 22 inches	6.25	56.00	5.00	45.00
Eros. Old rose. Huge double flower. Height 22 inches.....	6.25	56.00	5.00	45.00
Mount Tacoma. Largest double pure white Tulip with yellow base. Height 24 inches.....	6.25	57.00	5.00	46.00
Uncle Tom. Glossy dark maroon red. Large double flower. Height 22 inches.....	6.25	57.00	5.00	46.00

* Varieties recommended for forcing.

"MINIMUM ORDER—100 BULBS OF A VARIETY"

PRICES SUBJECT TO CHANGE WITHOUT NOTICE.

TRIUMPH
TULIP



ELIZABETH
EVERS

TRIUMPH TULIPS

	Top size Per	12 Up Per	1st size Per	11/12 Per
* Alberio. Wine-red with lighter margin, large flower on medium length strong stem. Fine for medium early forcing. Height 24 inches.....	100	1000	100	1000
* Aviator. Medium large, deep carmine red, edged white. Can be forced from Jan. 25th. Height 16 inches.....			4.25	37.00
* Crater. Large rich crimson. Fine for pots and can be flowered for Valentine's Day. Can be forced from Jan. 10th. Height 16 inches			5.00	42.00
* Crown Imperial. Rose tipped yellow. Very early forcer. Excellent for pots. Can be forced from Jan. 1st. Height 16 inches..			5.00	44.00
* Denbola. Carmine-red with white margin, a fine flower on strong stem; medium height 20 inches			5.00	46.00
* Edith Eddy. Huge carmine-red, edged white. Can be forced from Jan. 15th. Height 18 inches			5.00	42.00
* Elizabeth Evers. Deep bright carmine rose white base. Can be forced from Feb. 1st. Height 15 inches			5.00	42.00
* Elmus. Large carmine red, edged white. Can be forced from Jan. 25th. Height 18 inches.....			5.00	42.00
* Kansas. Snow-white good form and substance. Suitable for medium early forcing. Height 22 inches			5.00	42.00
* Korniforus. Clear red, a fine flower of strong texture on tall strong stem; forces fairly early. One of the best. Height 22 inches			4.25	37.00
* Telescopium. Violet-rose suffused red, violet at base. Large flower of great substance on tall strong stem. Can be forced to bloom in February. Height 22 inches			5.00	42.00
* Ursa Minor. Golden yellow, large globular flower on strong stem; medium height. Also good forcing variety. Height 18 inches....			5.00	42.00

BOTANICAL TULIPS

	Top Per	Size Per
* Clusiana (The Lady Tulip). Outer petals cherry-red, inner petals white, with violet centre. Excellent for pots. Height 8 inches	100	1000
	5.50	50.00



HYACINTH PINK PEARL

HYACINTHS

- ***Bismarck.** Light sky-blue, very large truss. Excellent for early forcing.
- ***City of Haarlem.** Bright yellow; fine large truss; suitable for bedding and forcing.
- ***Dr. Lieber** Dark porcelain-blue with lilac tinge.
- ***Gertrude.** Rich rose, with deeper stripe down center of petal.
- ***King of the Blues.** Bright blue, fine spike, good form.
- ***Lady Derby.** Light rose-pink, fine large spike.
- ***La Victoire.** Bright deep rosy crimson; close truss; fine form.
- ***L'Innocence.** Pure white, most popular of all whites.
- ***Myosotis.** Medium light-lavender blue.
- ***Pink Pearl.** Rose pink, heavy spike, large bells, early forcer.

	Per 100	Per 1000
18/19 cm.	16.50	155.00
17/18 cm.	14.50	135.00
16/17 cm.	12.50	115.00
15/16 cm.	11.00	100.00
14/15 cm.	9.50	85.00

*Varieties recommended for forcing.

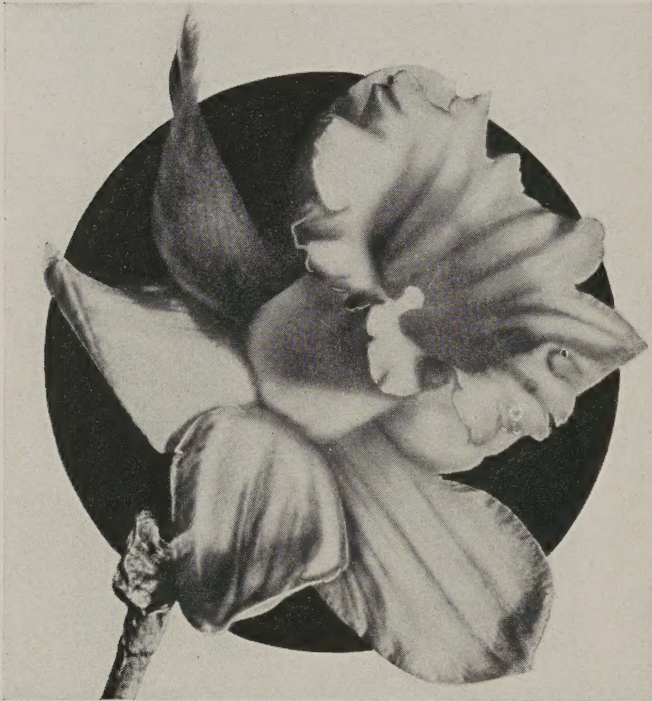
FRENCH ROMAN HYACINTHS

"Romans" are invaluable for early pot and bowl work. Can easily be brought into flower for Christmas and later. They can be well used as a substitute for Valley.

	Per 100	Per 1000
WHITE		
15/16 cm. (Scarce)	19.50	185.00
14/15 cm.	17.50	165.00
13/14 cm.	15.00	140.00
12/13 cm.	12.00	110.00
BLUE		
14 cm. up	7.00	60.00
PINK		
12 cm. up	11.00	100.00

"MINIMUM ORDER—100 BULBS OF A VARIETY"
PRICES SUBJECT TO CHANGE WITHOUT NOTICE.

NARCISSUS (DAFFODILS)
BLUE DIAMOND BRAND — YOUR GUARANTEE OF QUALITY



KING ALFRED (YELLOW TRUMPET)



CARLTON (INCOMPARABILIS)

YELLOW TRUMPET

	Double Nosed No. 1	
	Per 100	Per 1000
Aerolite. Medium yellow trumpet with deep primrose perianth. Fine for cutting.....	11.00	100.00
Alasnam. Wide, short, densely frilled trumpet of pure deep yellow, a shade deeper than the perianth; firmly placed with good neck. Good forcer; very early.....	11.50	105.00
Emperor. Yellow. Blooms in four weeks from January 20th	9.75	87.50
Godolphin. Uniform clear yellow. Can be forced after January 20th. Excellent pan variety.....	10.00	90.00
Golden Harvest. Very large deep golden-yellow flower. Earlier than King Alfred. Can be forced from Dec. 20th.....	11.00	100.00
Golden Spur. Golden-yellow perianth and Trumpet. Very Early. Can be forced after Jan. 5th..	10.00	90.00
Insurpassable. Huge golden-yellow flower. Can be forced after Jan. 15th.....	10.50	95.00
King Alfred. Golden yellow, very substantial, with long strong stem. Blooms in four weeks from Dec. 25th		
	American Grown	
Jumbo	14.50	135.00
D.N. No. 1	11.50	102.50
D.N. No. 2	8.25	72.50
	Dutch Grown	
Jumbo	12.50	115.00
D.N. No. 1	10.50	92.50
D.N. No. 2	8.00	70.00

YELLOW TRUMPET

	Double Nosed No. 1	
	Per 100	Per 1000
Magnificence. Uniform deep yellow. Very early. Can be forced from Dec. 15th.....	10.00	90.00
Minister Talma. Large golden-yellow, fringed edge. Blooms in four weeks from Dec. 15th....	10.00	90.00
Olympia. Large golden-yellow. Blooms in three weeks from January 20th.....	10.00	90.00
Rembrandt. Golden-yellow. Medium early. Can be forced after January 15th.....	10.50	95.00
The First. Cream perianth, golden trumpet. Very large. Should be forced to bloom from Dec. 15th to Jan. 15th only. The first lot intended for Christmas should be placed in the forcing house Nov. 28th	9.00	80.00
Tresserve. Yellow, beautifully formed flowers of enormous size. Blooms in three weeks from Jan. 15th	10.00	90.00
Warwick. Another of the striking King Alfred seedlings, outstanding in every way and very early. Refined stem and neck, bearing a star-shaped perianth of great substance. Golden yellow with trumpet a shade deeper in color	11.00	100.00
Wrestler. Fine medium sized yellow flower, very free flowering. Can be forced after Jan. 15th	10.25	92.50

"MINIMUM ORDER—100 BULBS OF A VARIETY"
 PRICES SUBJECT TO CHANGE WITHOUT NOTICE.



MRS. R. O. BACKHOUSE (LEEDSII)

WHITE TRUMPET

	Double Nosed No. 1	
	Per 100	Per 1000
Beersheba. Large pure-white trumpet and perianth. Extra fine form and good substance. Can be forced after Jan. 25th.....	15.00	135.00
Imperator. Large creamy-white trumpet. Medium late. Can be forced after Jan. 15th.....	10.50	95.00
Lovenest. Starry-shaped perianth with nicely proportioned trumpet of saffron yellow turning to apricot pink	20.00
Mrs. E. H. Krelage. Finest white Daffodil. Blooms in four weeks from Jan. 15th.....	11.00	100.00

BI-COLOR TRUMPET

Glory of Sassenheim. Perfectly formed white perianth. Large deep yellow trumpet. Blooms in four weeks from Jan. 1st.....	10.00	90.00
President Lebrun. Pure white perianth, with lemon yellow trumpet passing to creamy-white. Large well formed flower. Can be forced after January 20th.....	13.00	120.00
Solfataire. A very large flower with long, white petals and wide mouth, half-long cream cup. Blooms in four weeks; forced from Jan. 15th....	11.00	100.00
Spring Glory. White perianth, long golden trumpet. Blooms in four weeks from Jan. 15th.....	10.00	90.00
Van Waveren's Giant. Primrose perianth, bright golden-yellow trumpet. One of the largest of the commercial trumpet varieties, fine form and substance. Blooms in three weeks from Jan. 15th	11.00	100.00
Victoria. Pure white perianth, golden trumpet. Excellent for cut or potting. Blooms in three weeks from Jan. 15th	10.00	90.00



INCOMPARABILIS

	Double Nosed No. 1	
	Per 100	Per 1000
Carlton. Clear soft yellow perianth and trumpet, broad and overlapping large expanding trumpet, frilled at mouth. An impressive flower and long lasting	9.00	77.50
Croesus. Very large flat cup against a slightly reflexed perianth of creamy white with a tinge of lemon yellow. One of the most striking of all Daffodils. Excellent show variety....	8.50	75.00
Francisca Drake. Pure white perianth, yellow at the base, broad cup, golden yellow at the base and bright orange at the frilled edge....	10.00	90.00
Gold Eagle. Double Sir Watkin. True form of Sir Watkin having all the qualities of that well-known variety. One of the best double flowered varieties	10.50	95.00
Helios. Deep golden perianth, orange yellow cup. Greatly improved Sir Watkin.....	9.50	85.00
John Evelyn. Pure white perianth, wide frilled cup of soft orange-yellow	9.00	80.00
Lucinius. Golden perianth and large cup. Blooms in four weeks from Jan. 15th.....	8.50	75.00
Orange Glow. Large flower. Perianth yellow with pale-orange cup. Can be forced after Jan. 20th	9.50	85.00
Scarlet Elegance. Perianth deep-yellow, cup orange-red. Free flowering. Can be forced after Jan. 20th	9.50	85.00
Sir Watkin. Large and fragrant yellow flower. Blooms in three weeks from Jan. 30th.....	8.50	75.00

BARRII

Bath's Flame. Large yellow petals, shading into a brilliant red fringed cup. Blooms in four weeks from Dec. 15th.....	8.50	75.00
Diana Kasner. Pure white perianth, large yellow cup; frilled; blood red; very free flowering. Excellent forcer	8.50	75.00
Firetail. Broad petaled creamy-white perianth and large orange cup with scarlet orange frill	9.00	80.00
Mrs. Barclay. Very showy variety with broad overlapping white perianth and large flat apricot-orange crown, broadly banded deep orange-red. A perfect show flower.....	8.50	75.00

"MINIMUM ORDER—100 BULBS OF A VARIETY"
PRICES SUBJECT TO CHANGE WITHOUT NOTICE.

LEEDSII

	Double Nosed No. 1	
	Per 100	Per 1000
Mrs. R. O. Backhouse. Perianth creamy-white, small trumpet-shaped cup of pale apricot passing to pink. Can be forced after Jan. 25th	35.00
Silver Star. Large trumpet like flower with star shaped creamy perianth, cup light yellow fading to white	10.50	95.00
Tunis. Broad, pointed creamy white perianth, slightly recurving, with widely expanded sulphur-yellow cup, edged amber, deepening with age. Can be forced after Jan. 20th.....	11.00	100.00

TRIANDRUS HYBRIDS

Thalia. Two or three lovely pure white flowers per stem, 2 inches or more across, making a beautiful cluster. Very suitable for the rock garden or forcing	13.00	125.00
---	-------	--------

JONQUILLA HYBRIDS

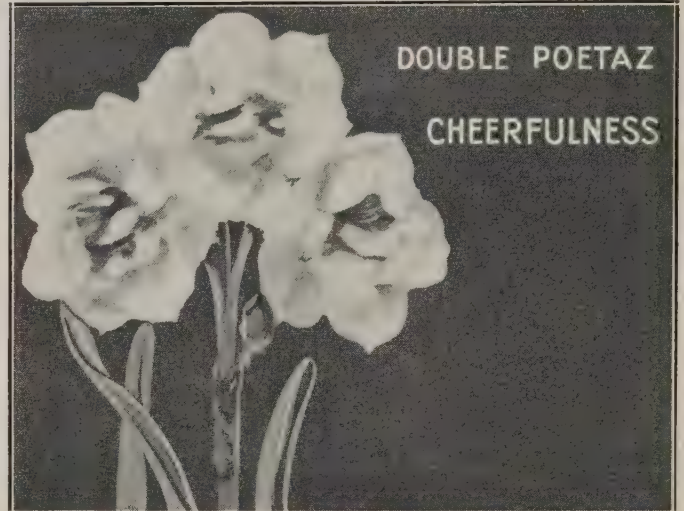
Golden Sceptre. Deep gold flowers of great substance. Star shaped perianth, free flowering	8.00	75.00
---	------	-------

POETAZ

Abundance. Old gold cup, yellow perianth. Blooms in ten days from Jan. 20th.....	7.50	65.00
Cheerfulness. See Double Narcissus for description	7.25	62.50
Early Perfection. The earliest of all Poetaz. Six to eight flowers per stem. Can be forced to bloom in early January. Pure white perianth, clear white cup	7.00	60.00
Geranium. Large pure white perianth, cup deep orange-red. Medium late. Can be forced after Feb. 1st	7.50	65.00
Laurens Koster. White perianth, orange cup. Free flowering. Blooms in two weeks from Jan. 15th	7.00	60.00
L'Innocence. Large flowered pure white wavy perianth, large bright canary yellow cup; averaging 5 flowers on a stem; one of the best whites	7.00	60.00
Orange Cup. Yellow perianth, cup orange-red, nicely frilled	7.00	60.00

POETICUS

Actea. Large, flat, overlapping pure white perianth, with yellow eye, broadly margined scarlet. A most beautiful exhibition flower and the largest and best Poeticus.....	8.00	70.00
Eagle. Large flower on strong stem, perfect perianth, scarlet cup. Blooms in three weeks from Jan. 20th	7.50	65.00
Ornatus Maximus. Extremely broad overlapping petals, recurving from typical pheasant's eye cup; a larger Ornatus unsurpassed for naturalizing	7.00	60.00
Recurvus. Pheasant's Eye. Perianth pure white and reflexing, eye margined deep orange-red. Very fragrant	7.00	60.00



DOUBLE

	Double Nosed No. 1	
	Per 100	Per 1000
Cheerfulness. Double white Poetaz, good stems, a fine show variety	7.25	62.50
Gold Eagle. See Incomparabilis Narcissus for description	10.50	95.00
Inglescombe. One of the finest of all double Daffodils. Bright sulphur yellow, uniform in color throughout; flowers of perfect form, very large, on stiff erect stems.....	10.00	92.50
Mary Copeland. Pure white perianth with intense bright scarlet center	22.50	200.00
Texas. Huge double flower. Outer and inside petals bright yellow, bright orange center. Can be forced after Jan. 20th.....	10.50	95.00
Twink. Petals alternating, soft primrose and clear orange. Forces easily, free flowering and hardy	10.00	92.50
Van Sion. Golden yellow. Fine for pans. Blooms in four weeks from Jan. 1st.....	9.50	85.00

MIXTURE

"SSS" Blue Diamond Mixed. Contains many varieties of all types especially blended for naturalizing	5.00	40.00
---	------	-------

NARCISSUS (Polyanthus Type)

	Per 100	Per 1000
CHINESE SACRED LILY		
14/16 cm.	6.50	52.50
16/18 cm.	7.50	62.50
GRAND SOLIEL D'OR		
14/15 cm.	5.00	45.00
15/16 cm.	6.50	52.50
16/17 cm.	7.00	60.00
PAPERWHITE GRANDIFLORA		
13/14 cm. (1000 per case)	4.50	40.00
14/15 cm. (1000 per case)	5.25	46.00
15/16 cm. (800 per case)	6.00	55.00
16/17 cm. (600 per case)	6.50	60.00

"MINIMUM ORDER—100 BULBS OF A VARIETY"
PRICES SUBJECT TO CHANGE WITHOUT NOTICE.



LILIES



Blue Diamond Quality
FOR GREENHOUSE CULTURE

PLEASE ORDER IN CASE LOTS. WE CANNOT ACCEPT ORDERS FOR LESS



"SSS" WONDERBELL IMPROVED

LILIUM LONGIFLORUM

New Longiflorum Lily from Bermuda. Very prolific bloomer; does not grow as tall as Harrisii; much firmer in texture of flowers; blooms ten days later than Harrisii.

6/7".....	335 per case
7/9".....	200 per case
8/10".....	150 per case
9/11".....	100 per case

ALL SIZES 50.00 per case

LILIUM WONDERBELL IMPROVED

The "SELECT CREOLE" grown exclusively for "SSS & Co." State inspected and certified. Special care is exercised in Grading, Packing, and Shipping to insure maximum bloom.

	Per Case
6/7".....	400 per case..... 50.00
7/8".....	250 per case..... 50.00
8/9".....	200 per case..... 65.00
9/10".....	150 per case..... 60.00
10/11".....	100 per case..... 60.00

LILIUM HARRISII

6/7".....	335 per case
7/9".....	200 per case
8/10".....	150 per case
9/11".....	100 per case

ALL SIZES 49.00 per case



LILIUM CROFT

LILIUM CROFT

Special selected Strain grown in Oregon. Unquestionably the finest Lily for Pots.

	Per Case
7/8".....	250 per case..... 40.00
8/9".....	200 per case..... 60.00
9/10".....	150 per case..... 60.00
10" up.....	100 per case..... 47.50

LILIUM LONGIFLORUM "ESTATE LILY"

Vigorous grower sending up strong stems which carry 4 to 8 immense pure white trumpet lilies. Flowers are long lasting much more so than the other Longiflorum types.

	Per Case
7/8".....	250 per case..... 42.50
8/9".....	200 per case..... 65.00
9/10".....	150 per case..... 60.00
10" up.....	100 per case..... 47.50

LILIUM HOWARDII

6/7".....	335 per case
7/9".....	200 per case
8/10".....	150 per case
9/11".....	100 per case

ALL SIZES 55.00 per case

LILIUM LONGIFLORUM MEXICANII

Fine for cutting throughout the year.

7/8".....	300 per case
8/9".....	250 per case
9/10".....	200 per case

ALL SIZES 45.00 per case

LILIUM ACE

Similar to CROFT with luxuriant darker green foliage. Very strong grower and prolific bloomer.

7/8".....	250 per case.....	Price on Application
8/9".....	200 per case.....	Price on Application
9/10".....	150 per case.....	Price on Application

HARDY LILIES

DELIVERIES FROM LATE FALL ON

Plant bulbs immediately on arrival in a well drained soil, giving them plenty of opportunity for root action. The containers should then be set on a raised platform in a cool, semi-dark place, affording perfect drainage. When flower buds appear, the plants will then readily submit to forcing. They may also be planted out of doors for flowering in June and early July and later.

PLEASE ORDER IN CASE LOTS. WE CANNOT ACCEPT ORDERS FOR LESS

	Size	Quantity Per Case	Per 100
Album. Glistening white flowers. Golden-yellow anthers	6/7"	200	62.00
	7/8"	150	67.00
	8/9"	125	78.00
	9/10"	100	84.00

Brownii. Trumpet shaped creamy-white flower shaded chocolate-brown on outside. July flowering. Height 3-4 ft.....	7/8"	150	64.00
	8/9"	125	69.00
	9/10"	100	75.00

Candidum (Madonna Lily). This lily likes a good, deep loamy soil, not too dry, and a sunny situation where it can be left undisturbed for years. Plant shallow, covering the bulbs not more than 1 inch or 2-3 inches if the soil is very light. Height 4-6 ft. June flowering.

TRUE FRENCH NORTHERN GROWN

Size	Per 100	Per 1000
20/22 cm.....250 per case.....	\$20.00	\$190.00
22/24 cm.....200 per case.....	24.00	225.00
24/26 cm.....150 per case.....	31.00	290.00
26/28 cm.....125 per case.....	41.00	390.00
28/30 cm.....100 per case.....	48.00	460.00
30/32 cm.....100 per case.....	60.00	575.00
32/35 cm.....75 per case.....	70.00
35 cm. up50 per case.....	80.00

SOUTHERN GROWN

20/22 cm.....250 per case.....	13.00	120.00
22/24 cm.....200 per case.....	16.00	150.00
24/26 cm.....150 per case.....	21.00	200.00
26/28 cm.....125 per case.....	26.00	240.00
28/30 cm.....100 per case.....	31.00	290.00
30 cm. up100 per case.....	37.00	350.00

	Size	Quantity Per Case	Per 100
Centigale. New Hybrid Lily flowering several weeks later than Regale, but of better form and substance than that variety	7/8"	250	30.00
	8/9"	200	36.00

Chalcedonicum (The Scarlet Turk's Cap Lily). Flowers intense scarlet with reflexed petals of wax like texture. July flowering. Height 3-4 ft.	Top	150	50.00
---	-----	-----	--------------

Croceum. Wide open bright orange blooms with tiny dark brown spots. June flowering. Height 4 ft.	6/7"	250	25.00
	7/8"	200	40.00

Hansoni. Golden-yellow wax like flowers with reflexing petals spotted maroon-brown, June flowering. Height 4 ft.....	Top	150	64.00
---	-----	-----	--------------

Henryi. Handsome branching heads of soft orange-yellow resembling in form L. Speciosum. Aug.-Sept. flowering	7/8"	200	12.00
	8/9"	175	18.00
	9/10"	150	22.00
	10/11"	125	24.00
	11/12"	100	28.00

Martigon. Light glossy-purple reflexed flowers spotted black. June flowering. Height 4 ft.	Top	150	48.00
--	-----	-----	--------------

Martigon Album. Waxy-white flowers, with reflexing petals and golden anthers. June flowering. Height 4 ft.	Top	150	60.00
--	-----	-----	--------------

Maxwill. One of the finest hybrid lilies yet raised, producing fine tall stems 6 ft. high having many brilliant orange red flowers. Late July flowering	Top	150	26.00
--	-----	-----	--------------

Maximowiczii. Vivid orange-red, reflexing petals freely spotted with purple-brown. July-Aug. flowering, Height 4 ft.....	Top	150	25.00
---	-----	-----	--------------

Orange Triumph (New Hybrid Lily Croceum X Umbellatum). One of the finest Lilies ever introduced. Exceptionally strong growing variety, with intense green glossy foliage. Flowers are borne in tiers, partly erect. Individual blooms 6" long and nearly as wide. Color bright orange with very few tiny maroon spots, hardly noticeable. Very free flowering as many as 12-15 blooms to the stem. Opens to last bud in water and has long keeping quality when cut. Excellent for forcing in pots and ideal cut flower as well as one of the best for Garden planting. June flowering. Height 4 ft.	6/7"	300	14.00
	7/8"	200	18.00
	8/9"	150	22.00
	9/10"	125	27.00
	10/11"	100	32.00

Pardalinum Giganteum. Flowers rich crimson shading to orange-red at the petal tips, the center of the flower being deep golden-yellow, richly spotted with purple brown; prominent chocolate-brown anthers. Bears up to 30 flowers when established. Height 6-7 ft. July flowering	Top	150	43.00
---	-----	-----	--------------

	Size	Quantity Per Case	Per 100	Per 1000
Regale. One of the finest and most beautiful of all Lilies, and certainly one of the easiest to grow, thriving in a great variety of soils. Slender stems, crowned with several large, funnel-shaped flowers variably wine-colored without, pure white on the face, clear yellow within the tube; anthers golden. Vigorous grower, attaining sometimes as high as twenty flowers or even more on a single stem. Stem rooting. Plant the bulbs 8" deep in any good well drained loam, with or without lime, preferably in a sunny position. Height 4-6 ft. July flowering	6/7"	250	9.00	85.00
	7/8"	250	11.00	100.00
	8/9"	200	17.00	160.00
	9/10"	100	22.00	210.00
	10/11"	100	27.00
	11/12"	100	35.00
	12/13"	50	47.00
	13" up	50	55.00

Regale Album. White sport of Regale. Flowers purest white both inside and outside of bloom. Habit of growth same as Regale.	6/7"	300	19.00
	7/8"	200	23.00
	8/9"	150	28.00
	9/10"	125	34.00
	10/11"	100	38.00

Regale Hybrid, G. C. Creelman. Strong grower producing as many as 25 flowers per stem. Individual blooms much larger than Regale. Inside of flower waxy-white with lemon yellow center, shaded outside brownish-mauve. July-Aug. flowering. Height 6 ft.	6/7"	300	19.00
	7/8"	200	23.00
	8/9"	150	28.00
	9/10"	125	34.00
	10/11"	100	38.00



LILIUM REGALE

HARDY LILIES

	Size	Quantity Per Case	Per 100
Rubrum Magnificum. Handsome heads of flowers with reflexing petals heavily spotted crimson on white ground.....	7/8"	150	38.00
	8/9"	125	45.00
	9/10"	100	50.00
Sutchuenense (Wilmottiae Unicolor). Glowing vermillion orange color with dark scarlet anthers. July flowering. Height 5 ft.	5/6"	250	24.00
	6/7"	200	30.00
	7/8"	150	40.00
Tenuifolium. Slender stems with grassy foliage, glossy scarlet flowers with reflexed petals. Height 1½ ft. June flowering	3/4"	500	12.00
	4/5"	400	18.00
Tenuifolium Golden Gleam. Golden-yellow form of Lil. Tenuifolium.....	3/4"	500	14.00
	4/5"	400	20.00
Testaceum Excelsum. Tall strong grower, each stem bearing up to 12 apricot flowers, recurved petals and with contrasting bright red anthers. June-July flowering. Height 4-5 ft.	7/8"	150	85.00
	8/9"	125	100.00
	9/10"	100	120.00
Tigrinum Flore Pleno. Double orange scarlet flowers spotted crimson. Height 4 ft. Aug.-Sept. flowering	4/5"	400	12.00
	5/6"	250	16.00
Tigrinum Fortunei Giganteum. Tall growing variety, carrying when established up to 40 flowers, vivid salmon-orange, spotted purple. Sept. flowering. Height 5-6 ft.	6/7"	250	12.00
	7/8"	200	18.00
	8/9"	150	22.00

	Size	Quantity Per Case	Per 100
Tigrinum Splendens. Very handsome, producing pyramidal heads of bright fiery orange-scarlet flowers with large crimson brown spots. Height 6 ft. Aug.-Sept. flowering	6/7"	250	10.00
	7/8"	200	16.00
	8/9"	150	19.00
Umbellatum. Free flowering group of Hybrid Lilies. June blooming. Very effective for border plantings; also make excellent pot plants.			
Umbellatum Erectum. Rich red shading to deep orange-yellow at center. Height 2½ ft.	6/7"	250	18.00
	7/8"	200	22.00
	8/9"	125	25.00
Umbellatum Feu Brilliant. Bright orange. Height 2 ft.	Top	150	23.00
Umbellatum Golden Fleece. Golden yellow, edged apricot. Height 2 ft.	Top	150	25.00
Umbellatum Incomparable. Deep orange-scarlet, shading to gold at center. Height 2½ ft.	Top	150	23.00
Umbellatum Refulgence. Uniform shade of rich flame-red. Height 2½-3 ft.	Top	150	25.00
Umbellatum Sappho. Deep orange with crimson at tips of petals. Height 2-2½ ft.	Top	150	23.00
Umbellatum Splendidum. Brilliant vermilion shading to rich coppery-crimson. Height 2½ ft.	Top	150	25.00
Umbellatum Vermillion Brilliant. Brilliant blood crimson, petals slightly spotted with black. Height 1½ ft.	Top	150	23.00
Willmottiae. Slender rich green grassy foliage, very luxuriant bearing many flowers with strongly recurved petals, vivid orange red, covered with small dark brown spots. Height 4-6 ft. July-Aug. flowering	5/6"	250	17.00
	6/7"	200	20.00
Willmottiae Improved. An improved Willmottiae, flowers are much larger and of richer color. Habit of growth and time of bloom same as the older variety.....	5/6"	250	37.00
	6/7"	200	40.00

MISCELLANEOUS BULBS

ALSTROMERIA

- Chilensis.** Flowers in pleasing shades from light pink to orange, 1 inch across in a large umbel on stems 2 to 4 feet tall. Very good cut flower.
- Ligtu Hybrids.** Flowers similar to Chilensis but larger and later flowering. Stems about 3 feet tall and very sturdy. Colors range through pink, orange and flame, pinks predominating.
- Pelegrina.** Flowers dark rose with inner petals heavily spotted with reddish purple, 1 to 1¼ inches across, in a large umbel on 14 to 18 inch stems. Vigorous grower.
- Pelegrina Alba.** Very beautiful form of A. Pelegrina, flowers pure white without spots.

\$20.00 per 100

\$175.00 per 100

AMARYLLIS

Giant American Hybrids (Hippeastrum)

	Per 100	Per 1000
2½-3"	20.00	175.00
3-3½"	29.00	275.00
3½-4" (Scarce)	45.00	425.00
4" up (Scarce)	60.00	575.00



BEGONIA, DOUBLE CAMELIA FLOWERED



BEGONIA, GIANT SINGLE FRILLED

MISCELLANEOUS BULBS
ANEMONES

SINGLE	Size	Per 100	Per 1000
Monarch de Caen. Beautiful poppy-flowered Anemone. Large saucer-shaped blooms in bright shades of pink, red, and blue.....	No. 1	3.75	32.50
	Jumbo	5.50	50.00
Blue Poppy. Large single flowers in various shades of blue	No. 1	4.00	35.00
	Jumbo	6.00	55.00
His Excellency. Huge red, brilliant flower..	No. 1	4.00	35.00
	Jumbo	6.00	55.00
The Bride. Large pure white flower with white center	No. 1	4.00	35.00
	Jumbo	6.00	55.00
SEMI DOUBLE			
St. Brigid. Semi-double flower in bright shades of red, pink and blue.....	No. 1	4.00	35.00
	Jumbo	6.00	55.00

BEGONIAS-TUBEROUS ROOTED (Belgian Grown)

"MINIMUM ORDER 50 BULBS AND NOT LESS THAN 10 IN ANY ONE COLOR"

	Per 100	Per 1000
Double Camelia Flowered		
Giant double camelia-like Flower.....		
COLORS—Crimson, Pink, White, Coppery, Rose, Scarlet, Orange, Yellow, Salmon.	1 1/4-1 1/2" 7.00	60.00
	1 1/2-2" 12.00	100.00
	2"-Up 17.00	140.00
Double Rosebud		
Flowers of the most exquisite form resembling perfect rosebuds, with beautiful, two-tone, pastel shade coloring.....	1 1/4-1 1/2" 8.50	75.00
	1 1/2-2" 14.00	130.00
Double Frilled or Carnation (Fimb. Plena.)		
Petals are frilled with serrated edges, flower when in full bloom resembles a Carnation		
COLORS—Crimson, Pink, Orange, White, Yellow, Coppery.	1 1/4-1 1/2" 8.50	75.00
	1 1/2-2" 14.00	130.00

	Per 100	Per 1000
Double Picotee.		
The flowers are slightly smaller than the large Camelia Type in some instances but of beautiful Camelia form, with two-toned combinations of the colors Pink and White with a definitely contrasting edge	1 1/4-1 1/2" 8.50	75.00
	1 1/2-2" 14.00	130.00
Double Hanging Basket		
Known as Pendula or Lloydii type. Hundreds of small double flowers produced from a single bulb.....		
COLORS—Scarlet, Pink, Yellow, White, Orange, Salmon.	1 1/4-1 1/2" 9.00	80.00
	1 1/2-2" 15.00	140.00
Double Marmorata (Camelia Type)		
Scarlet colored flower spotted and laced white	1 1/4-1 1/2" 8.50	75.00
	1 1/2-2" 14.00	130.00
Giant Singles		
This type produces largest flowers. Extensively used for bedding.	1 1/4-1 1/2" 7.00	60.00
COLORS—Crimson, Scarlet, Pink, Orange, White, Yellow, Coppery.	1 1/2-2" 12.00	100.00
	2"-Up 17.00	140.00
Giant Single Frilled (Crispa)		
Large profusely frilled and ruffled single flowers. Fine for bedding.	1 1/4-1 1/2" 7.00	60.00
COLORS—Crimson, Pink, Orange, White, Yellow, Coppery.	1 1/2-2" 12.00	100.00
	2"-Up 17.00	140.00
Begonia Multiflora (Lilliput or Miniature)		
Group of double flowered Begonias which are especially adapted for borders. They are best suited for mass plantings and will bloom profusely throughout the summer.		
Ami Jean Bard. Copper.....	1 1/4-1 1/2" 15.00	140.00
Helen Harms. Yellow.....	1 1/4-1 1/2" 18.00	170.00
Le Flamboyant. Scarlet.....	1 1/4-1 1/2" 15.00	140.00
Madame R. Galle. Salmon.....	1 1/4-1 1/2" 12.00	110.00
Madame Frene Eysser. Large salmon-orange	1 1/4-1 1/2" 30.00	285.00

We Can Also Supply American Grown Stock. Prices on Application.



"SSS" FANCY-LEAVED CALADIUMS

MISCELLANEOUS BULBS

FANCY-LEAVED CALADIUMS

		Per 100	Per 1000
Separate Named Varieties.....	1½-2"	17.50	160.00
	2"-Up	24.00	225.00
	3"-Up	42.50	400.00
Named Varieties Mixed.....	1½-2"	16.50	155.00
	2"-Up	23.00	220.00
	3"-Up	40.00	375.00

(Special descriptive list mailed on request)

CALLAS

Aethiopica. Large pure White.....	1½-1¾"	17.50	160.00
	1¾-2"	24.00	225.00
	2-2½"	31.00	290.00
	2½"-Up	45.00	400.00
Godfrey (Home Grown). White.....	1½-1¾"	24.00	225.00
	1¾-2"	31.00	290.00
Elliottiana. Golden Yellow Flower.....	2-2½"	16.00	145.00
	2½-3"	27.00	250.00
	3"-Up	40.00	370.00

CHIONODOXA LUCILLAE (Glory of the Snow)

Brilliant blue, white center.....	2.00	15.00
-----------------------------------	------	-------



SPRING FLOWERING CROCUS



CALLA AETHIOPICA

SPRING FLOWERING CROCUS

		Per 100	Per 1000
Enchantress. Light blue paler margin.....	Top	2.25	17.50
Mont Blanc. Pure white.....	Top	2.25	17.50
Purpurea Grandiflora. Rich purple.....	Top	2.25	17.50
Sir Walter Scott. White striped purple.....	Top	2.25	17.50
Yellow Mammoth. Deep yellow.....	Top	2.25	17.50
Mixed. All colors included.....	Top	2.25	16.00

DIELYTRA (Dicentra, Bleeding Heart)

Spectabilis	45.00
--------------------------	-------

NOVELTY CALLAS

Arum Pictum (Black Calla). Very large black flower, fading to maroon as the bloom becomes older. There is no disagreeable odor. A fine novelty. Top Size	Per 100 35.00
Rehmanni Superba (Pink Calla). A dwarf calla having a rose pink flower which fades to cerise as bloom matures. Very unusualTop Size	37.50

FREESIAS

	1/2-5/8"	5/8-3/4"	3/4-7/8"	
	100	1000	100	1000
NEW HYBRID INTRODUCTIONS				
Mammoth White	4.75	37.50	5.75	47.50
Extra large pure white. Very early.			7.00	60.00
Mammoth Yellow	4.75	37.50	5.75	47.50
Extra large pure yellow. Very early.			7.00	60.00



FREESIA

FREESIAS

STANDARD LISTING	1/2-5/8"		5/8-3/4"		3/4-7/8"	
	100	1000	100	1000	100	1000
Apotheose	1.75	12.00	2.50	20.00	3.50	30.00
Pink white throat.						
Blanche Blue	2.50	20.00	3.00	25.00	5.00	40.00
Blue.						
Elder's Giant White	2.50	20.00	3.00	25.00	5.00	40.00
Large White. Late.						
Golden Daffodil	1.75	12.00	2.50	20.00	3.50	30.00
Early Yellow.						
Golden Giant	3.50	25.00	4.25	32.50	5.50	45.00
Bright Golden-Yellow.						
Marie	4.75	37.50	5.75	47.50	7.00	60.00
Huge Early White.						
Oriole	3.50	25.00	4.25	32.50	5.50	45.00
Early Deep Golden-Orange.						
Purity Superflora	1.75	12.00	2.50	20.00	3.50	30.00
Early White.						
Schroeder's White Perfection	2.50	18.00	3.00	25.00	4.00	37.50
Large White.						
Sunset	1.75	12.00	2.50	20.00	3.50	30.00
Orange-Yellow.						
White Chief	1.75	12.00	2.50	20.00	3.50	30.00
Late White.						
Rainbow Mixture	2.00	15.00	2.50	20.00	3.50	30.00

"SSS" GIANT HYBRIDS

Pure White	2.75	22.50	3.50	30.00	4.50	40.00
Light Yellow	2.75	22.50	3.50	30.00	4.50	40.00
Rose	2.75	22.50	3.50	30.00	4.50	40.00
Bright Red	2.75	22.50	3.50	30.00	4.50	40.00
Finest Blue	2.75	22.50	3.50	30.00	4.50	40.00
Pink	2.75	22.50	3.50	30.00	4.50	40.00
Mixture	2.75	22.50	3.50	30.00	4.50	40.00



GALANTHUS (SNOWDROP)

	Per 100	Per 1000
GALANTHUS NIVALIS (Snowdrops)		
Large flowered pure white with green markings.....	3.50	30.00

BABY GLADIOLUS (Colvilli). Top size

Ackermanni. Salmon orange, white blotch.....	4.50	40.00
Blushing Bride. Blush white, carmine blotch.....	4.50	40.00
Brilliant. Earliest red	4.50	40.00
Charm. Violet rose	4.50	40.00
Nymph. White carmine blotched.....	4.50	40.00
Peach Blossom. Exquisite pink.....	4.50	40.00
Spitfire. Brilliant reddish salmon.....	4.50	40.00
The Bride. Lovely white.....	5.50	50.00



GLOXINIAS, EMPEROR FREDERICK

GLOXINIAS

Minimum order 50 Bulbs and not less than 10 of any one variety.

- Blanche De Meru.** Pinkish rose, white throat.
- Emperor Frederick.** Scarlet bordered white.
- Emperor William.** Violet bordered white.
- Etoile De Feu.** Light scarlet, compact growth.
- Mont Blanc.** Clear glistening white.
- Prince Albert.** Darkest violet, beautifully frilled.
- Princess Elizabeth.** Light blue, white throat.
- Roi Des Rouges.** Brilliant crimson scarlet, huge flower beautifully frilled.
- Tigrina** (Spotted and stained hybrids). Large flower with a short throat. Entire blossom veined and spotted, in a mixture of pink, blue, purple, and red markings on white.
- Violacea.** Soft violet.

PRICES ON ALL ABOVE VARIETIES

	Per 100	Per 1000
1¼-1½"	12.50	110.00
1½-2"	16.00	140.00
2"-Up	27.00	240.00

DUTCH IRIS

Wedgewood. Clear light blue.	8/9 cm.	9/10 cm.	10 cm.	Up		
	100	1000	100	1000	100	1000
American Grown	2.50	20.00	5.00	45.00	6.50	60.00
Holland Grown	2.25	17.50	3.50	25.00	5.50	45.00
Bronze Queen. Bright brown-bronze, bluish	6/7 cm.	7/8 cm.	8/9 cm.			
bronze falls	100	1000	100	1000	100	1000
	3.50	30.00	4.50	40.00	6.00	50.00
Golden Harvest. Tall golden-yellow	3.50	30.00	4.50	40.00	6.00	50.00
H. C. Van Vliet. Large deep-blue	3.00	25.00	4.00	35.00	5.00	45.00
Huchtenburg. White and yellow bi-color	2.75	22.50	4.25	37.50	5.50	50.00
Imperator. Popular dark blue	2.25	16.00	3.25	27.50	4.50	40.00
Leonardo Da Vinci. Creamy-white standards, canary yellow falls	3.00	25.00	4.25	37.50	5.50	50.00
White Excelsior. Pure white	2.50	20.00	3.75	32.50	4.50	40.00
White Superior. Extra large pure white	3.50	30.00	4.50	40.00	6.00	50.00
Yellow Queen. Golden yellow	3.50	30.00	4.50	40.00

Per
100 Per
1000

IXIAS (African Corn Lilies)

"SSS" Mixed. Splendid assortment of all colors..... 3.00 25.00

LEUCOCORYNE (Glory of the Sun)

Ixiodes OdorataTop size 8.50 75.00

MUSCARI (Grape Hyacinths)

Armeniacum. Large clear blue.....Top size 2.50 20.00
Botryoides Albus (White grape hyacinth). A cluster of white corals.....Top size 3.00 25.00
Heavenly Blue. Bright sky-blue.....Top size 2.50 20.00

ORNITHOGALUM

Arabicum. Globe-shaped white flowers with jet black center. Very fragrant, grows to height of 2 feetTop size 5.50 50.00

OXALIS

Bermuda Buttercup. Yellow.....Top size 3.00 25.00
Grand Duchess Lavender.....Top size 2.75 22.50
Grand Duchess Rose Pink.....Top size 2.75 22.50
Grand Duchess White.....Top size 3.00 25.00



RANUNCULUS

RANUNCULUS

Per
100 Per
1000

S.S.S. Supreme Strain. The largest and most magnificent strain of Ranunculus. Flowers are very double and some semi-double, with light green centers.

Supreme Gold Shades	No. 1	4.00	32.50
	Jumbo	6.00	55.00
Supreme Orange Shades	No. 1	4.00	32.50
	Jumbo	6.00	55.00
Supreme Pink Shades	No. 1	4.00	32.50
	Jumbo	6.00	55.00
Supreme Red Shades	No. 1	4.00	32.50
	Jumbo	6.00	55.00
Supreme White Shades (Whites predominate)	No. 1	4.00	32.50
	Jumbo	6.00	55.00
Supreme Yellow Shades	No. 1	4.00	32.50
	Jumbo	6.00	55.00
Supreme Mixed (Beautiful range of all colors)	No. 1	3.75	30.00
	Jumbo	5.50	45.00

SCILLA CAMPANULATA (Wood Hyacinth)

Tall stems of large open campanulate bell-shaped flowers.

Alba Maxima. Large white, long spikes.... Top 2.50 20.00
Blue Queen. Lavender blue..... Top 2.50 20.00
Excelsior. Deep lavender striped blue.
 Robust Top 2.75 22.50
Rose Queen. Lavender pink, long spikes.... Top 2.25 17.50

SCILLA Siberica (Siberian Squill). Bright blue, flowers early spring..... Top 2.75 22.50

TRITONIA CROCATA (Flame Freesia)

Pink Princess. Beautiful clear pink..... Jumbo 3.50 30.00
Prince of Orange. Bright orange..... Jumbo 3.50 30.00
Hybrid Mixture. Well blended. All varieties included Jumbo 3.50 30.00

PLANTS



SEEDS

CALCEOLARIAS 2 1/4"

	Per 25	Per 100
Multiflora Nana —Excellent strain.....	4.50	16.00
Multiflora Nana (Gilbert's Strain).....	4.50	16.00
Triumph —Outstanding strain. Bushy, shapely plants with clean foliage. Flowers large and tigered. Bright shades of red, orange, pink, and yellow....	4.50	16.00
Greater New York —All the finer shades and colors including 5 shades of Red, Yellow, Bronze, Honey-Dew, etc.	6.75	25.00
Pure Flame —Brilliant flame red.....	6.75	25.00
Sensation —Best Hybrid. In 6 fine colors.....	6.75	25.00
Pink Perfection —Rich, rosy pink.....	6.75	25.00
Stewartii —Canary yellow	6.75	25.00
Pink Beauty —Strawberry color.....	6.75	25.00
Rosacker's Brilliant —Deep rich garnet red, small flower	6.75	25.00
Imp. Perfection —A real boon to florists—all colors, very strong grower.....	6.75	25.00
Golden Talisman —Golden amber.....	6.75	25.00
Cherry Queen —Deep reddish pink.....	6.75	25.00
Mary Louise (New)—Brilliant, carmine red, early.....	6.75	25.00

DAPHNE CNEORUM

A popular pot plant. Forms a magnificent solid pink globe of most fragrant blossoms. The individual flower resembles Bouvardia. Can be had in flower from St. Valentine's Day to the Spring holiday season, and blooms again in early Fall. The Fall flowering quality makes it extremely desirable for the garden after flowering in the home.

Field grown plants, trimmed, well-shaped and stored, suitable for forcing.

	Per 10	Per 100	Per 1000
5/7"	6.00	55.00	500.00
6/9"	8.00	75.00	700.00
9/12"	10.00	95.00	900.00

NEW IVIES

Silver Leaf. Outstanding, Sport of Merion Beauty. Winner of Silver Medals at National Flower Show S. A. F. & O. H. Chicago 1947—New York Florists Club, 1947—International Flower Show, New York, March 1947. First Class Certificate of Merit Massachusetts Horticultural Society.

(Electra Fertilizer recommended for growth and for bringing out color—100 lbs. \$6.75)

Rooted Cuttings	10.00 per 100	85.00 per 1000
2 1/4" (shipment in bottle area only)....	25.00 per 100	200.00 per 1000
	250 or more of a size at 1000 rate.	

* **Silver King.** Variegated Ivy. **Rooted Cuttings.** 15.00 per 100
* Minimum order 100 R. C.

ALL-DOUBLE PETUNIA "GLORIOUS"

Dwarf — Giant Fringed — Large Sized Flowers.

Plants dwarf compact, excellent for growing Winter and Spring Pot Plants. Sow late this Fall and Early Winter for Best Results.

We are pleased to be able to offer the following straight colors and The Glorious Mixture subject to Crop and Delivery. All Orders will be filled in rotation so PLEASE ORDER EARLY.

PRICES PER PACKET EACH.

ORCHID	Tr. Pkt. (1000s)	1/128 Oz.	1/64 Oz.	1/32 Oz.
PURPLE	}	7.25	13.50	25.00
ROSE				
SALMON				
WHITE				

"GLORIOUS MIXTURE"

A Formula Mixture of the Above.

Tr. Pkt. (1000s)	1/128 Oz.	1/64 Oz.	1/32 Oz.
3.50	6.50	12.00	22.00

STOCKS. GIANT COLUMN

SUPER WHITE (DuPezas)

Winner of **SILVER MEDAL AWARD** at the March Meeting of the New York Florist's Club, 1947.

Tr. Pkts. 1.00..... 1/8 oz. 2.00

CALCEOLARIA

Monarch Strain. An outstanding Strain Grandiflora type, dwarf compact with beautifully tigered flowers

Tr. Pkt. 1.00

GLOXINIA HYBRIDA GRANDIFLORA

Choicest Mixed Hybrids.....
Tr. Pkt. 1.25

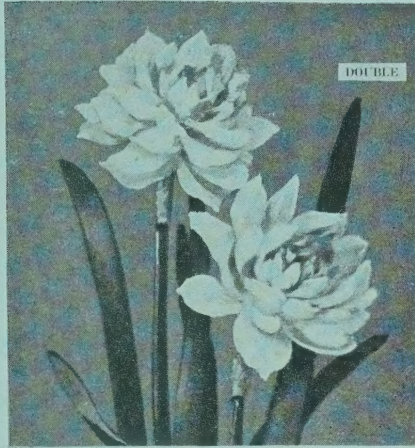
OUR GENERAL CATALOG CONTAINS COMPLETE LIST OF SEEDS, BULBS, PLANTS AND SUPPLIES. A COPY WILL BE SENT ON REQUEST.

PLANTING TABLE FOR BULBS OR PLANTS REQUIRED FOR FILLING ROUND BEDS

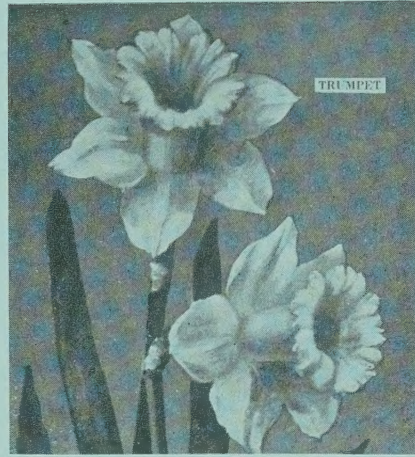
Bed Diameter	4 in. Apart	6 in. Apart	12 in. Apart	18 in. Apart	24 in. Apart
3 ft.	65	30	8
4 ft.	125	50	13	7
5 ft.	175	83	21	10
6 ft.	265	118	30	15	8
7 ft.	350	158	40	20	10
8 ft.	460	206	52	25	13
10 ft.	720	325	82	40	20
12 ft.	1020	456	115	57	30
14 ft.	1400	615	155	78	40
16 ft.	1820	810	202	100	50
18 ft.	2290	1020	255	126	64
20 ft.	2840	1260	315	156	78

Note—Outside row should be half the distance from the edge of the bed so that the bulbs or plants stand apart.

For Square Beds, add 25% to the number required for a round bed of same diameter.



DOUBLE



TRUMPET



JONQUILLA



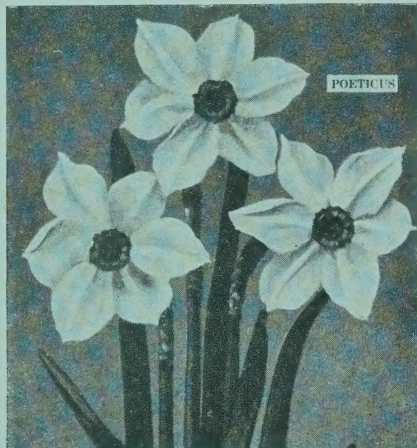
BICOLOR



BARRI



POETAZ

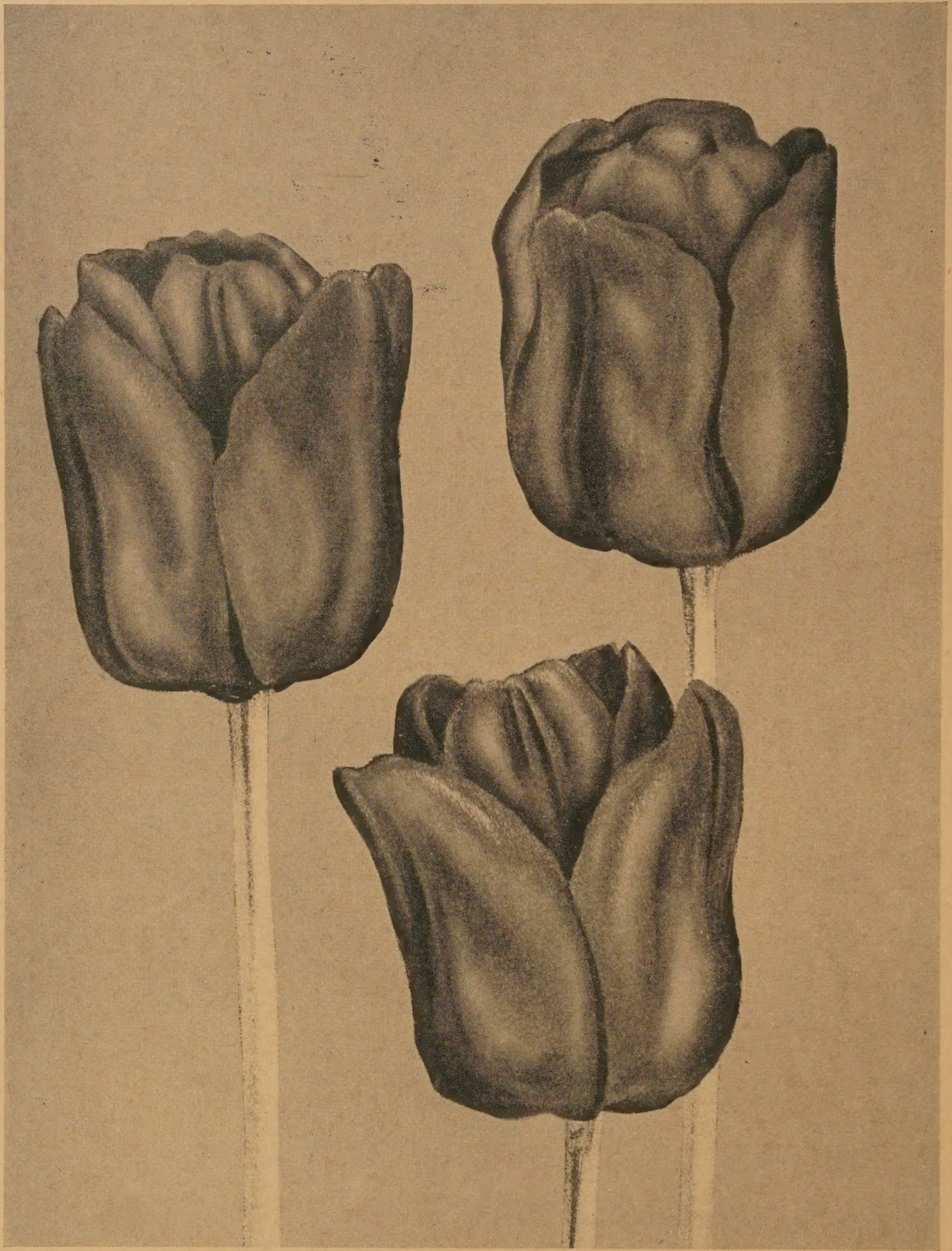


POETICUS



INCOMPARABILIS

DAFFODILS



CAMPFIRE TULIP